



# G2LINK Amplifer USB Driver(s)

This document will walk the reader through the process of installing the USB driver(s) allowing the G2LINK amplifier to communicate with a fully patched Windows 10 computer via the USB cable and the computers web browser.

NOTE: It is best the target computer is fully patched with all available updates. Contact your computers manufacturer or IT department to ensure the computer is fully patched.

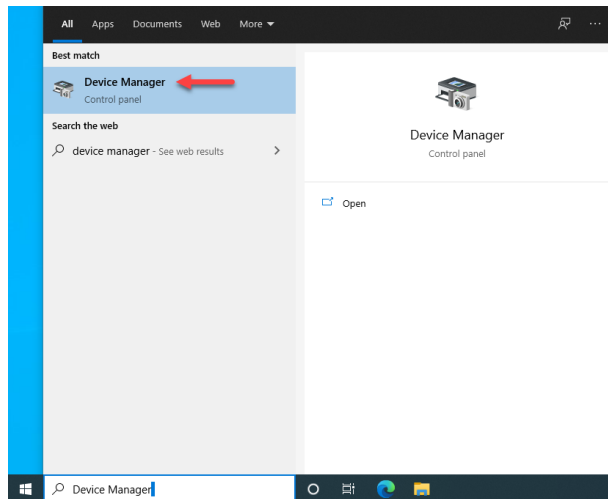
NOTE: The readers screens may appear different than what is shown in the directions below. The images are shown as an example only. (Your computer will screen will not show **highlighted** text or arrows.)

## Installing the USB Driver(s)

Follow these instructions to.

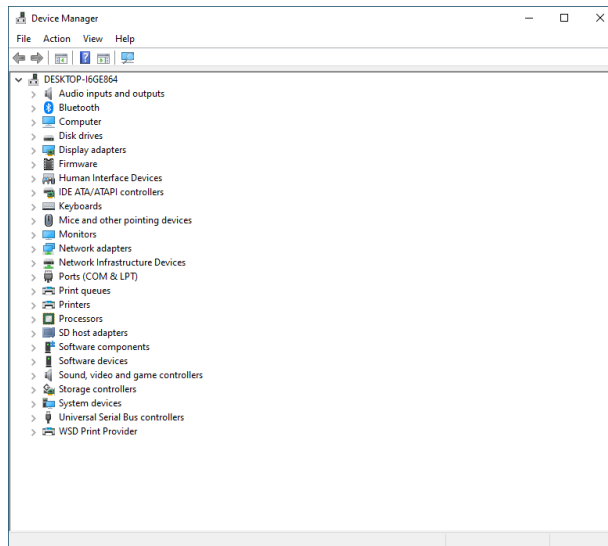
### Windows Desktop

1. Type **Device Manager** in the Windows Search field.
2. Click **Device Manager** in the Best Match area.



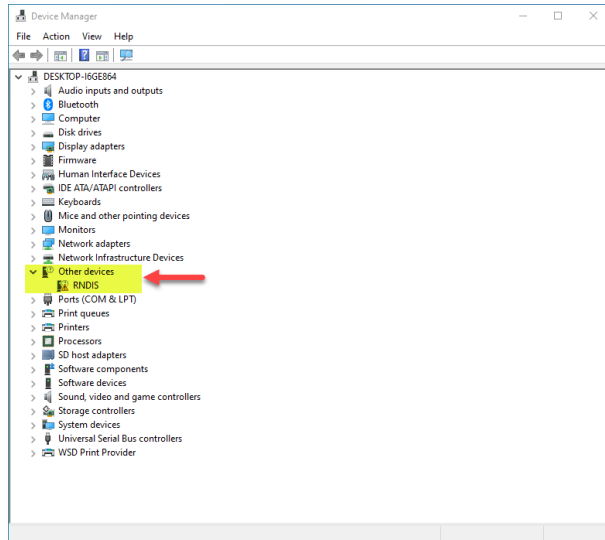
### Device Manager Window

3. Note the status of the Device Manger Window when it loads on the screen.



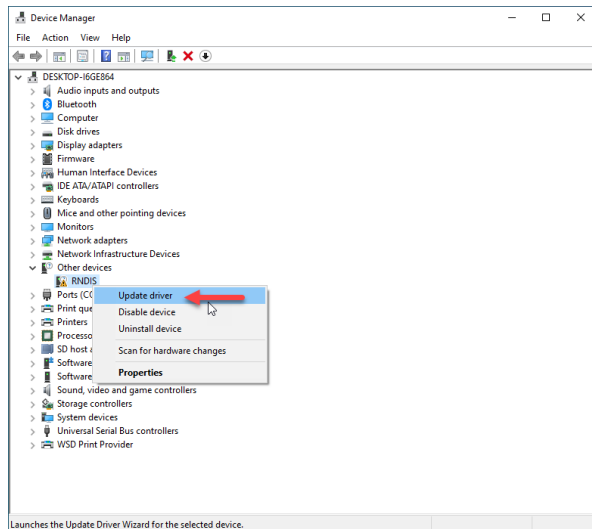
### Device Manager Window

4. Plug the USB C cable into the G2LINK Amplifier and the computer.
5. Notice the New Device displayed in the Device Manager Window.



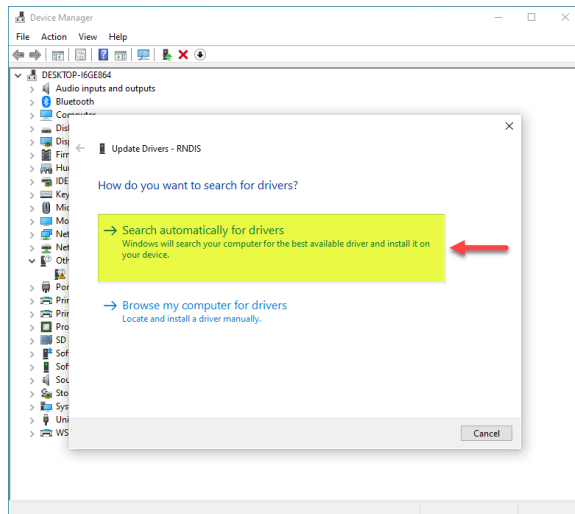
### Device Manager Window

6. Place the mouse over the text reading RNDIS.
7. Right Click.
8. Select **Update Driver**.
9. A new window will appear.



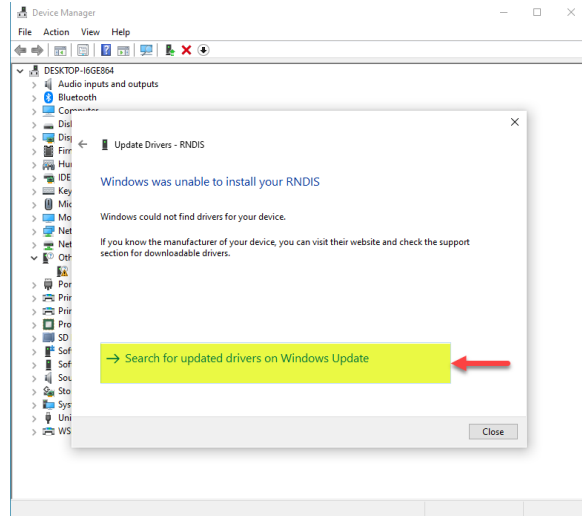
### Update Drivers – RNDIS Window

10. Click the text reading **Search automatically for drivers**.
11. A new window will appear.



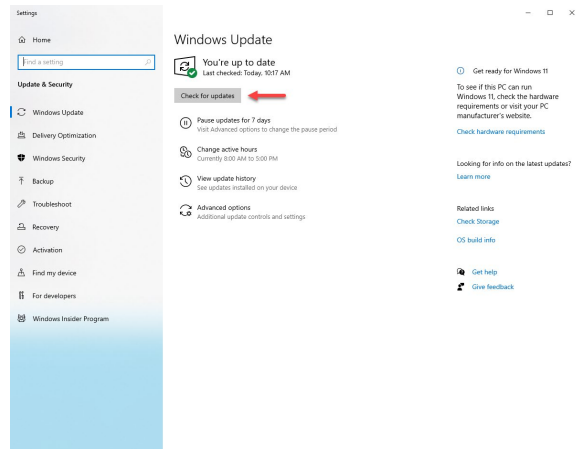
## Update Drivers – RNDIS Window

12. Click the text reading **Search for updated drivers on Windows Update**.
13. The window will change.



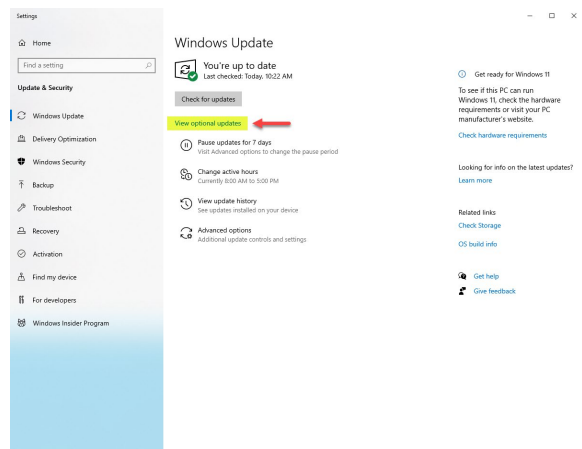
## Settings – Windows Update Window

14. Click the **Check for Update** box.



## Settings – Windows Update Window

15. Click the text reading **View optional updates**.



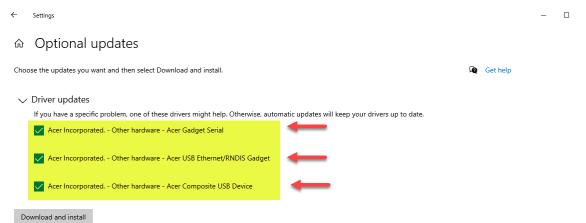
## Settings – Optional Updates Windows

16. Click the carrot to the left of the text reading **Driver updates** to expand the list.



## Settings – Optional Updates Windows

17. Place a check in each of the following drivers:
  - a. **Acer Incorporated – Other hardware - Acer Gadget Serial**
  - b. **Acer Incorporated – Other hardware – Acer USB Ethernet/RNDIS Gadget**
  - c. **Acer Incorporated – Other hardware – Acer Composite USB Device**



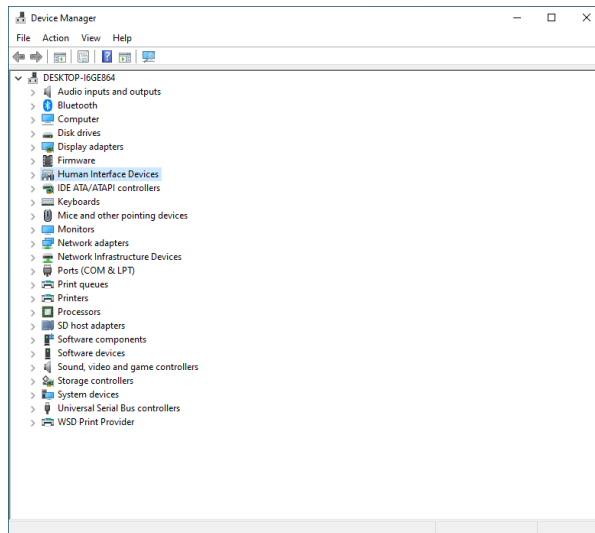
18. Click the **Download and install** button.

## Device Manager Window

19. The Screen will return to the Device Manger window.

Note: The Other Devices heading is no longer displayed.

20. You may ping the G2LINK in the command window by it's default IP address. The G2LINK will respond to the ping. (not shown)





### ***Device Manager Window***

21. Open the computers web browser.
22. Type the default IP address of the amplifier in the web browser
23. The user interface of the G2LINK amplifier will display.

